



This Document provide by

North American Bluebird Society

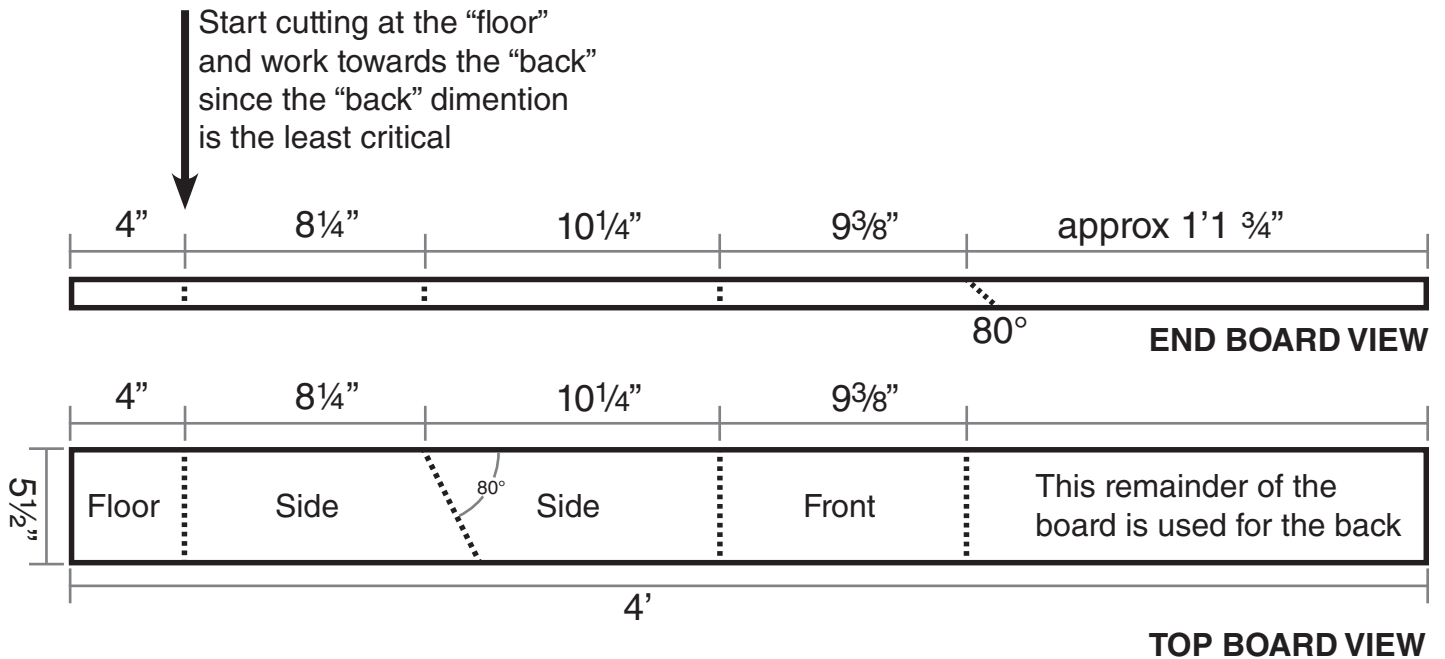
www.nabluebirdsociety.com

Eastern or Western Bluebird Nestbox

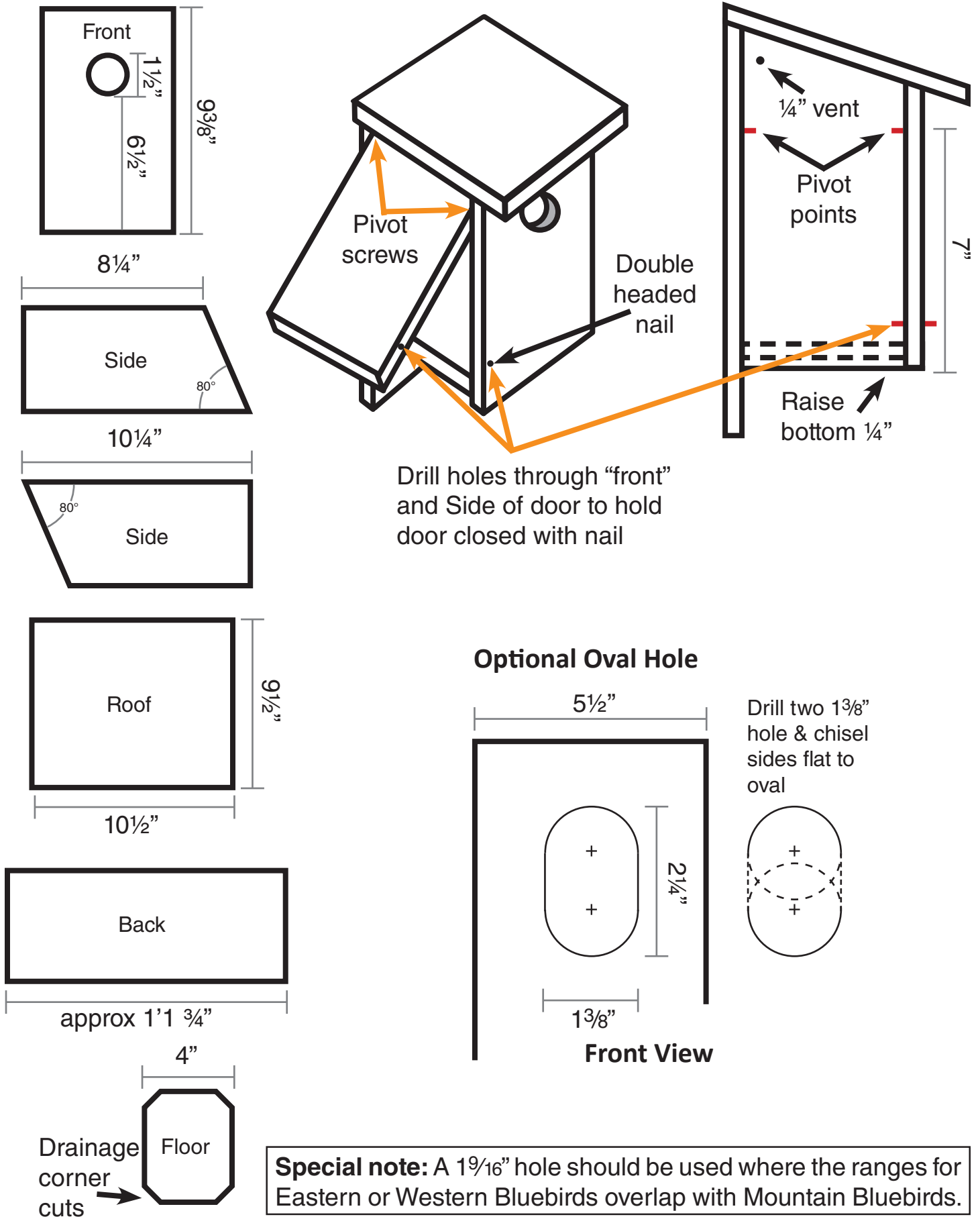
MATERIALS LIST

- Standard board 1" x 6" x 4' long
- Standard Board 1" x 10" x 10 1/2" long (for roof)
- 1-3/4" galvanized nails or screws - approx. 20
- 1-3/4" galvanized screw or nail for pivot point - 2
- Double-headed nail for holding door closed - 1

Board Diagram



Construction Plan



Special note: A 1 9/16" hole should be used where the ranges for Eastern or Western Bluebirds overlap with Mountain Bluebirds.